

Simula Research Laboratory: Strategy for targeting ERC

Martha Hvoslef-Eide, PhD, Director of External Funding

simula

Simula Research Laboratory, Oslo



A limited company owned by The Norwegian Ministry of Education and Research

Research is focused on:

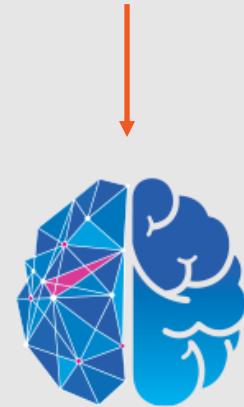
- Networks & communication systems
- Scientific computing
- Software engineering
- Machine learning
- Cybersecurity

160 scientific employees + 30 admin

simula

Our ERC story so far...

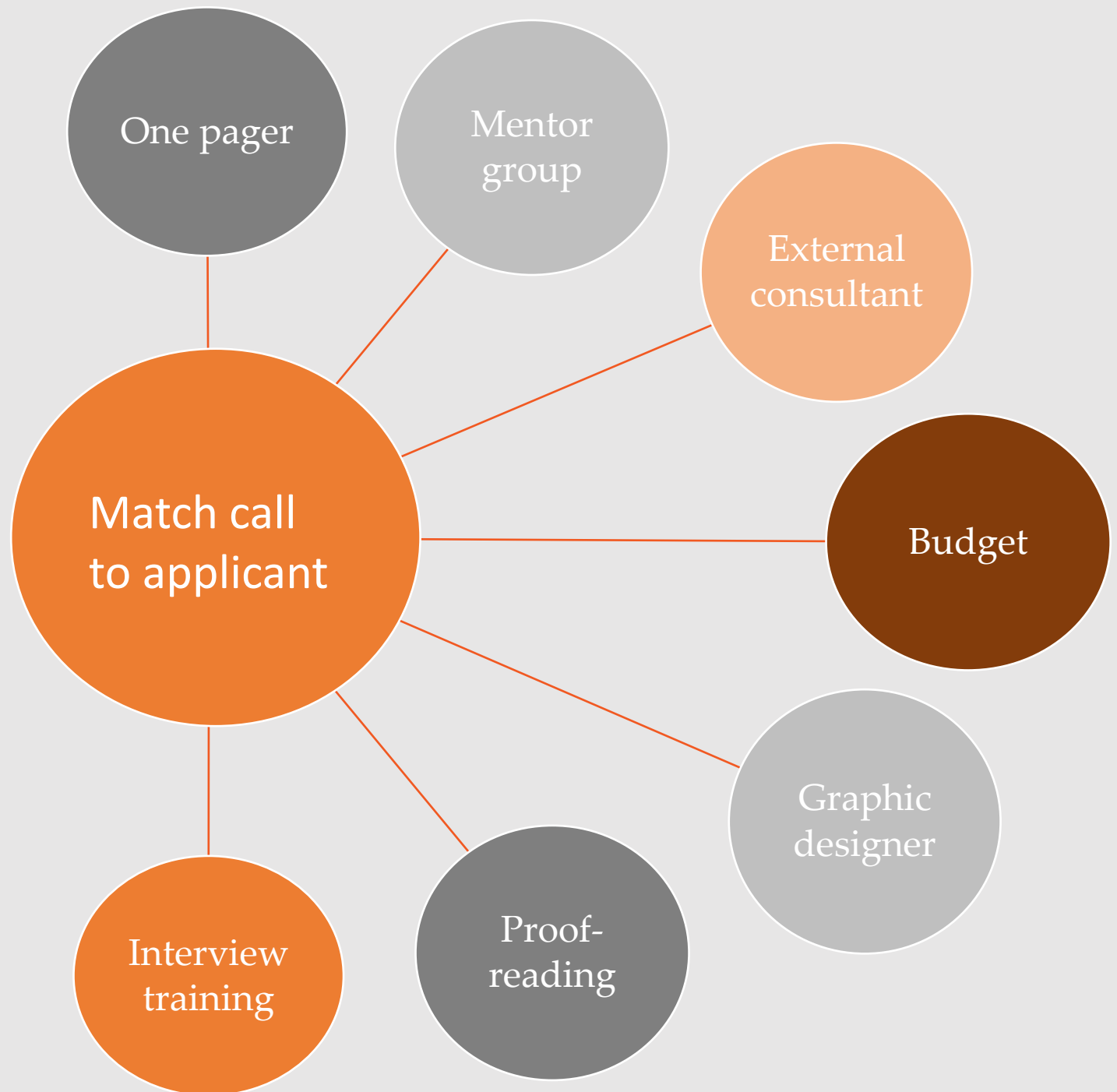
- StG – 5 submissions; 1 interview (not funded); **1 funded**
- CoG – 1 submission
- SyG – 1 submission



waterscales

simula

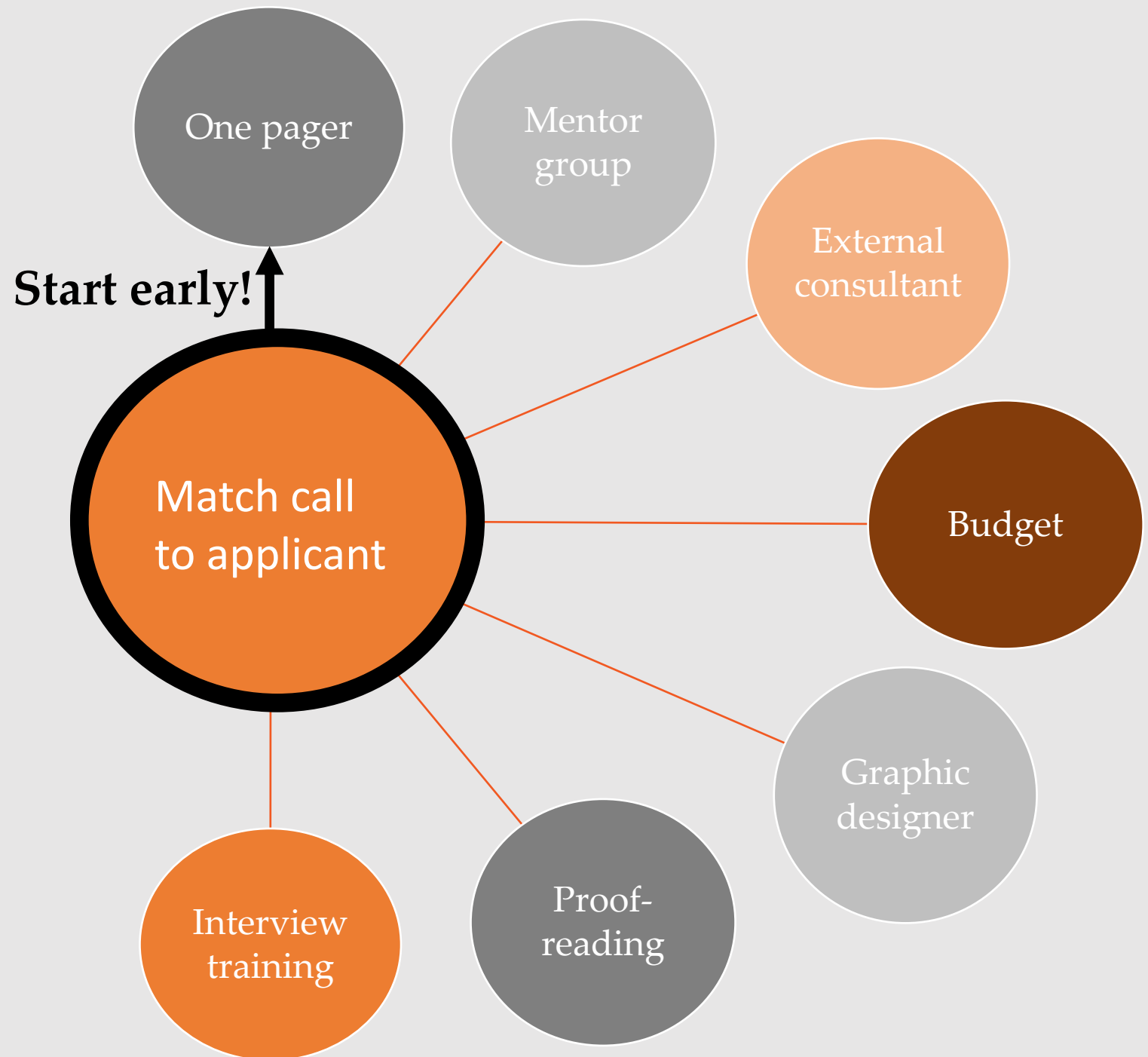
Quality Assurance Process



Quality Assurance Process



Quality Assurance Process



Thank you for your attention



Martha Hvoslef-Eide

DIRECTOR OF EXTERNAL FUNDING



David Ros

EU SCIENTIFIC ADVISOR



Louise Bolands Eklund

EU PROJECT ADMINISTRATOR

simula