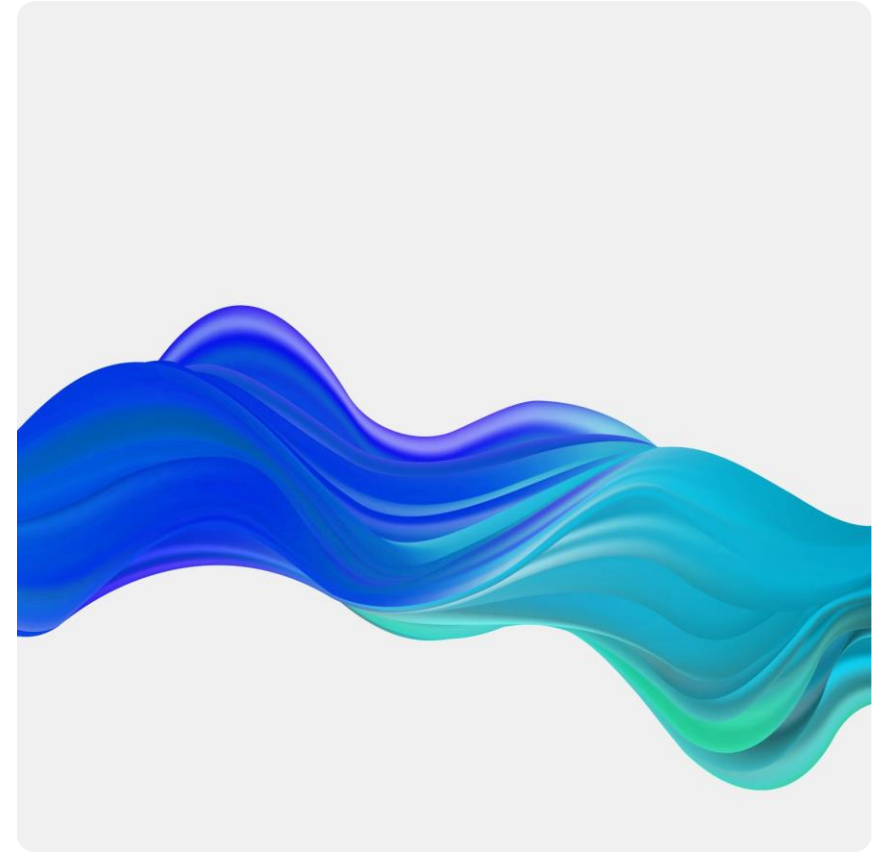


Industry- Research Infrastructures Cooperation

Preliminary Results of the ESFRI Drafting
Group on Industry- RI cooperation





ESFRI workplan 2022-2023

- Establishment of ESFRI drafting group on industry –research infrastructure cooperation
- Task:
 - get a better understanding of the collaborative relationships between Research Infrastructures (RI) and industry (as RI user, collaborator or component provider)
 - identify the areas where RI need further support in developing relevant guidance documents that would further enhance collaboration with industry.



ESFRI drafting group on industry- research infrastructure cooperation work

- The first questionnaire, focused on **research infrastructures**, inquired on their experience with cooperation with partners from industry, was sent to all the contact people of Landmarks in ESFRI Roadmap (43). **35 replies** were received.
- The second survey, **aimed at industry**, was sent to the coordinators of 41 Landmarks in ESFRI Roadmap, asking them to circulate a survey on collaboration of industry with RIs among their respective industrial partners as well as via the ENRIITC ICO/ILO network to ICO/ILO contacts with the request to share the survey link with their industrial partners. In total, **157 respondents** participated in the survey, with 89 completed the full questionnaire.
- Several questions were similar in both questionnaires, so the views from either side could be compiled. Open-ended questions provided for an interesting set of replies and proposals from RIs as well as from their industrial partners.



Main findings

- There is a lively cooperation between RIs and industry: as many as **92% of respondents from industry** cooperate with RIs and **83% of RIs** who answered the questionnaire do so!
- Most common form of cooperation is the **cooperation within EU-funded projects** or projects, funded from other international/ national sources!
- RIs see that industry is primarily **using the research equipment and access to data** available in RIs; while the industrial correspondents also place **access to facilities** as an important reason for cooperation.
- Majority of the RIs respondents **actively stimulate cooperation**, also the respondents from industry state that they often initiate the cooperation and **plan to engage with RIs in the future as well.**



Main findings- II

- **Industry:**

- Cooperation is needed and is needed in the future, but barriers exist:
 - lack of finance to engage with RIs;
 - lack of **in-house** personnel;
 - IPR issues,
 - lack of information, what RIs have to offer,
 - simplification of contractual procedures, etc.
- Support is expected, especially for SMEs.

- **Research Infrastructures:**

- Cooperation is welcome, but better solutions need to be elaborated:
 - issues related to appropriate business model for RI- industry cooperation,
 - legal issues, related to income generating activities,
 - financial issues: what can be provided free of cost and what needs to be charged, etc.
- Better sharing of experience, search for good practice examples.



Conclusion

- The two surveys identified a number of issues, which require closer examination and need to be addressed in more detail;
- Industry- Research Infrastructures cooperation is important for both and should be further encouraged;
- Drafting group sees plenty of opportunities for collaboration on this issue.